

PROJECT DESCRIPTION



PROJECT: BUNSCOIL NIC AMHLAIDH
CATHERINE MCAULEY JUNIOR PRIMARY SCHOOL
AND
BUNSCOIL RÍS
EDMUND RICE SENIOR PRIMARY SCHOOL
AT
CASTLEMOYLE, NEW ROSS, CO. WEXFORD

CLIENT: DEPARTMENT OF EDUCATION & SKILLS

DATE: JUNE 2017



CLIENT/ EMPLOYER:

Department of Education & Skills



PROJECT TEAM:

ARCHITECTS

& DESIGN TEAM LEADERS:

NMA Architects



QUANTITY SURVEYORS:

Turner & Townsend



STRUC & CIVIL ENGINEERS:

Malachy Walsh & Partners



M&E SERVICES ENGINEERS:

Matt O'Mahony & Assocs



PSDP (HEALTH & SAFETY):

OLM Consultancy



MAIN CONTRACTOR:

Sammon Contracting Ireland Ltd



Project Description:

The construction of two new two storey primary schools (Approx 3000m2 each) both consisting of 18 classrooms, ancillary accommodation and a special needs unit and external site works including on site car parking, access roads, drop off areas, ball courts, hard play areas and site boundary treatments.

The project amalgamates three existing primary schools (St. Josephs Primary School, Michael Street National School & CBS Primary School) in New Ross, into two separate Junior and Senior primary school buildings.



Site Layout Plan showing the new Senior & Junior Schools and site works

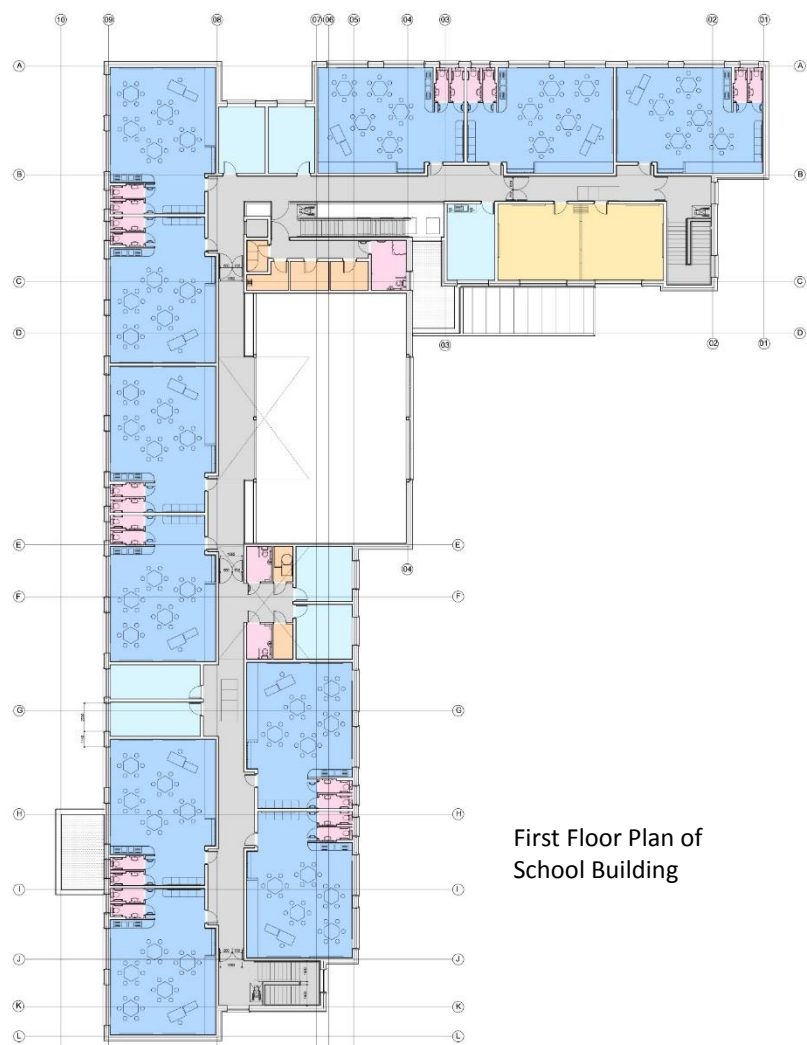
Project plans:



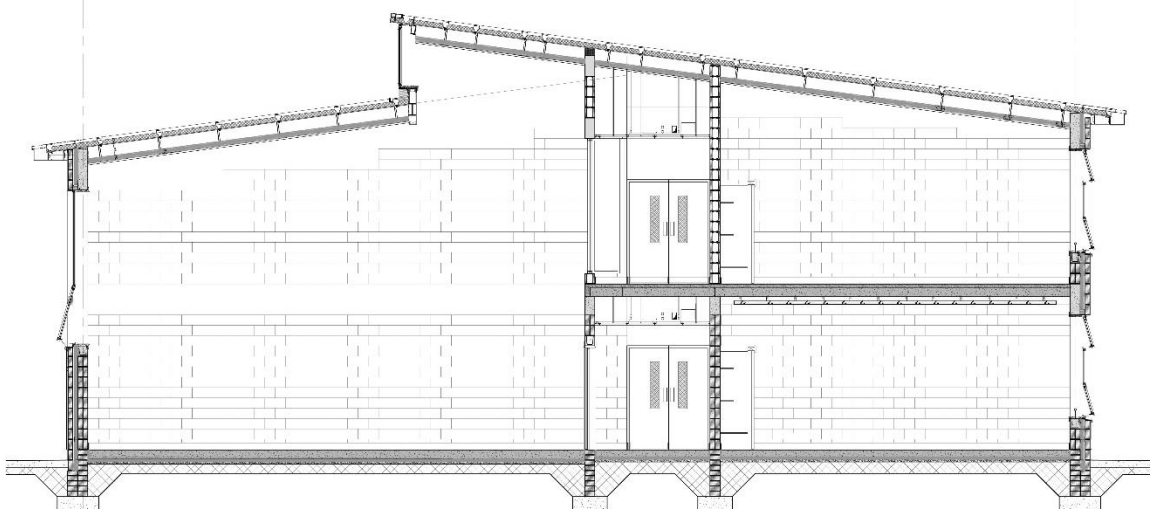
Ground Floor Plan of
School Building

Project plans & section:

The project includes highly energy efficient design in accordance with the Department of Education & Skills Technical Guidance Documents.



First Floor Plan of
School Building



Section through school

Project photos:



School entrance area



General purpose hall with
timber sports floor and
acoustic panels



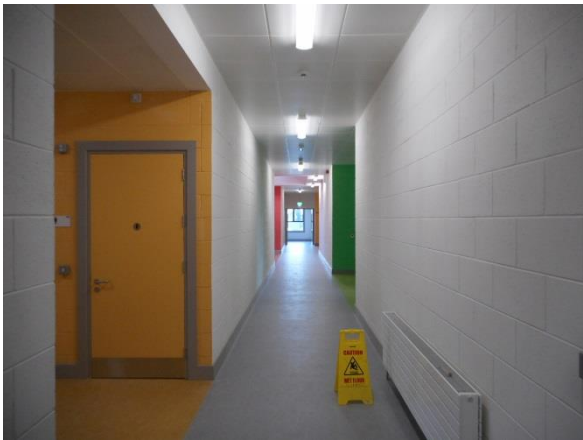
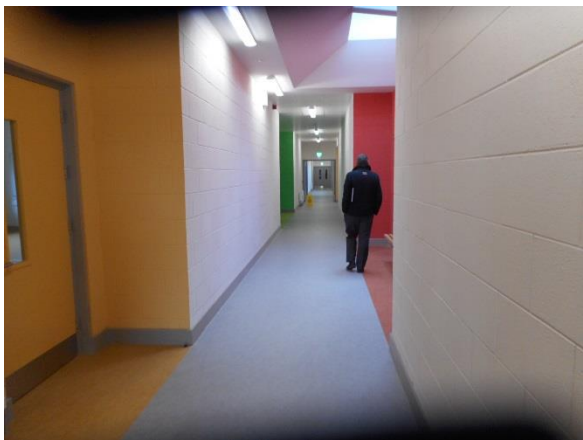
Project photos:



Classrooms with good quality daylight, natural ventilation and colours to finishes and fitted furniture.



Project photos:



Circulation areas with use of colour and daylight.

Project images:



Aerial view image of schools campus



Image from school entrance gates

PROJECT: NEW ROSS JUNIOR & SENIOR SCHOOLS
CASTLEMOYLE, NEW ROSS, CO. WEXFORD

